

## Wall Mount Computer Station WMCS

## Assembly Instructions



How can we improve our assembly instructions?  
Your comments and suggestions are important to us.  
Please e-mail us at: [support@versatables.com](mailto:support@versatables.com).

Revised: 03.15.2019



Lifetime Warranty



Quantity Discounts



Assembled in USA



Fast Shipping

# Hardware & Parts List

## Wall Mount Computer Station

50mm Furniture Bolt



Qty:4

8mm Phillips Machine Screw



Qty:4

1/4 - 20 Phillips Head Bolt



Qty:4

LCD Holder



Qty:1

4mm & 8mm Allen Wrench



Qty:1

Upright Pole



Qty:1

Zip Tie & Curly Tie



Qty:5

Keyboard Platform



Qty:1

Keyboard Bracket



Qty:1

Upright Pole Bracket



Qty:2

Toggler



Qty:4

20mm Furniture Bolt




Qty:2

3/8 - 16 x 1" Socket Head Bolt



Qty:2

CPU holder



Qty:1

Clamp Bushing



Qty:2

Clamp



Qty:1

CPU Holder Mount Bracket



Qty:1

1" 7/8 Velcro Pads  
1 Velcro Loops  
1 Velcro Hooks



Qty:2

### Additional Tools Required

Drill & 1/2" Drill Bit



Phillips Screw Driver

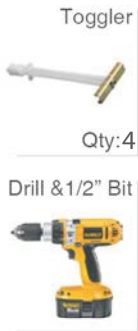


# Assembly Step-by-Step

## Wall Mount Computer Station

### Step 1

### Install Toggles



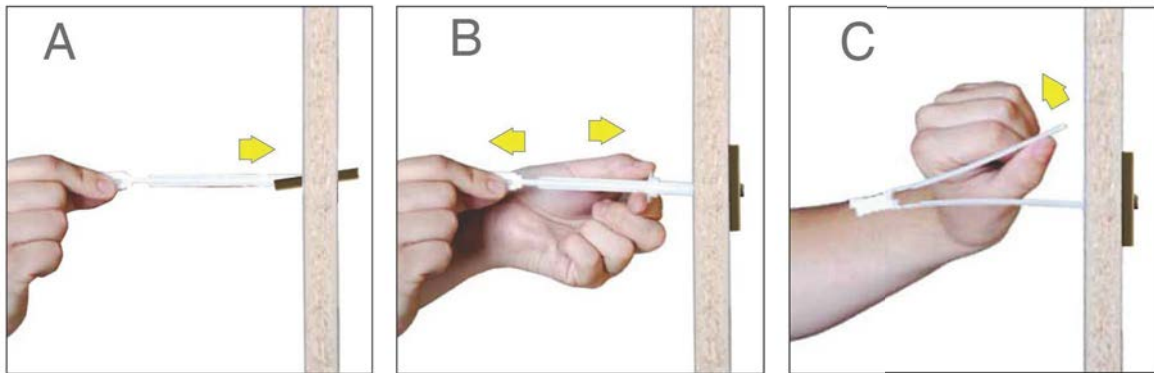
A: Drill a 1/2" hole. Slide Metal Anchor of Toggler through hole. Minimum clearance behind wall is 1-7/8".

B: Pull end of Toggler until Metal Anchor is flush against inside of wall. Push Plastic Collar into wall to lock in place.

C: Snap exposed material off, flush with Plastic Collar.



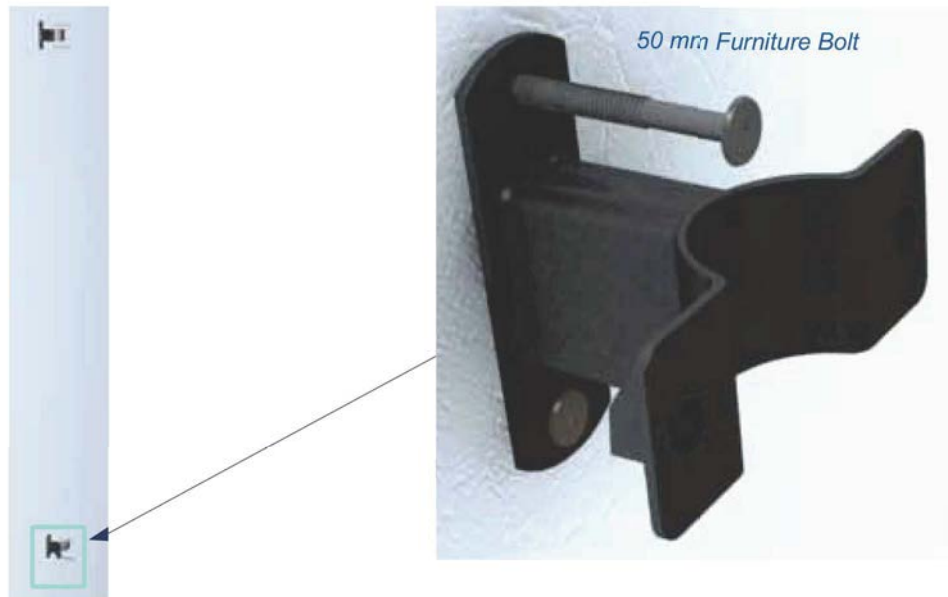
NOTE: Extra Toggle Bolts are provided



### Step 2

### Upright Pole Brackets

Attach Upright Pole Brackets to the wall using (4) four 50mm Furniture Bolts.



### Step 3

### Upright Pole

Secure Bottom Pole Holder using (2) 3/8 - 16 x 1" Socket Head Bolts.

3/8 - 16 x 1"  
Socket Head Bolt



Qty:2



### Step 4

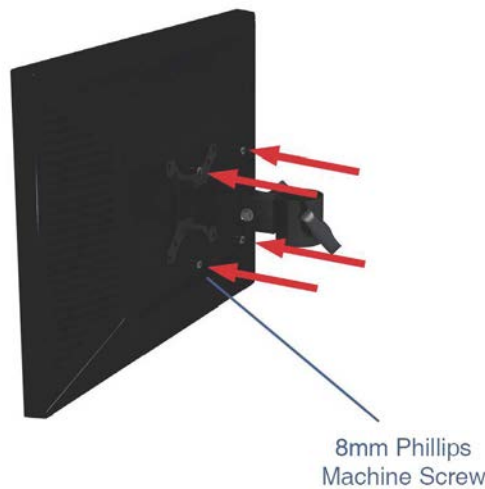
### LCD Monitor

Attach LCD Monitor using (4) 8mm Phillips Machine Screws.

8mm Phillips  
Machine Screw



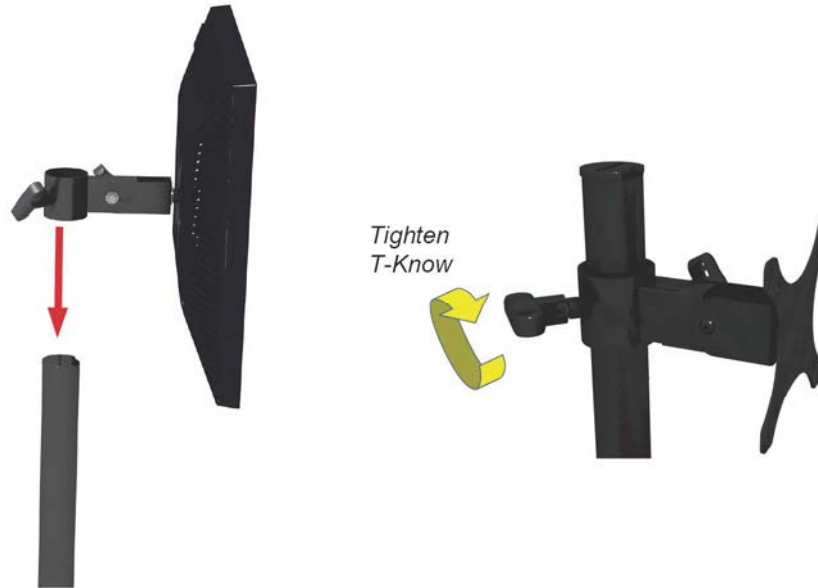
Qty:4



### Step 5

LCD Bracket

Slide LCD Bracket.



### Step 6

Upright Pole

Secure Top Pole Holder using (2) 3/8 - 16 x 1" Socket Head Bolts.

3/8 - 16 x 1"  
Socket Head Bolt



Qty:2



#### Step 7

Attach Keyboard Bracket to Pole at the desired height/side using (1) Clamp Bracket and (2) 3/8-16 x 1" Socket Head Bolts.

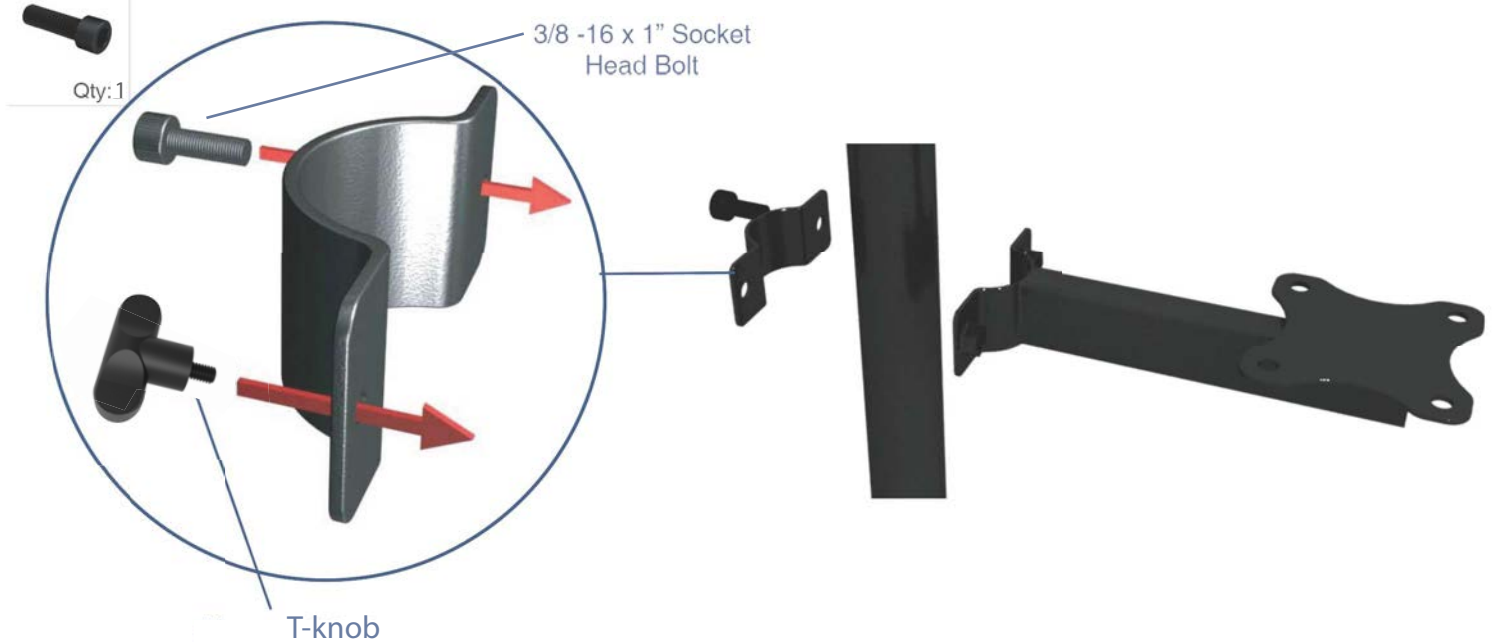
3/8 -16 x 1"  
Socket Head Bolt



Qty: 1

3/8 -16 x 1"  
Socket  
Head Bolt

T-knob



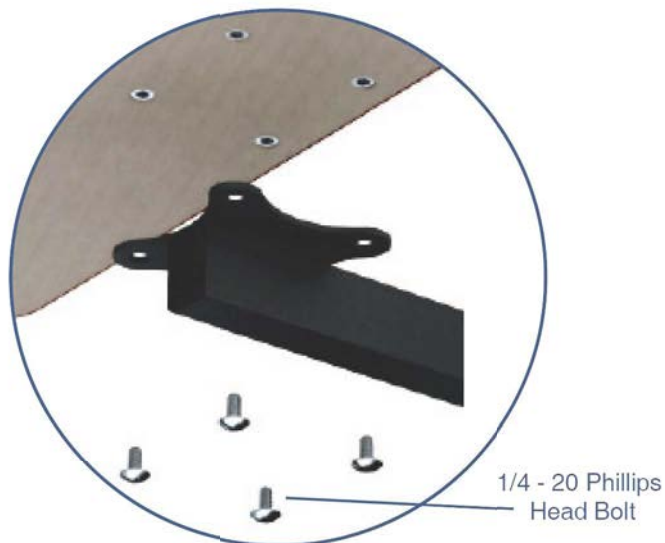
#### Step 8

Attach the Keyboard Platform to Keyboard Bracket using (4) 1/4-20 Phillips Head Bolts.

1/4-20 Phillips  
Head Bolt



Qty: 4



### Step 9

Attach mount bracket to CPU holder

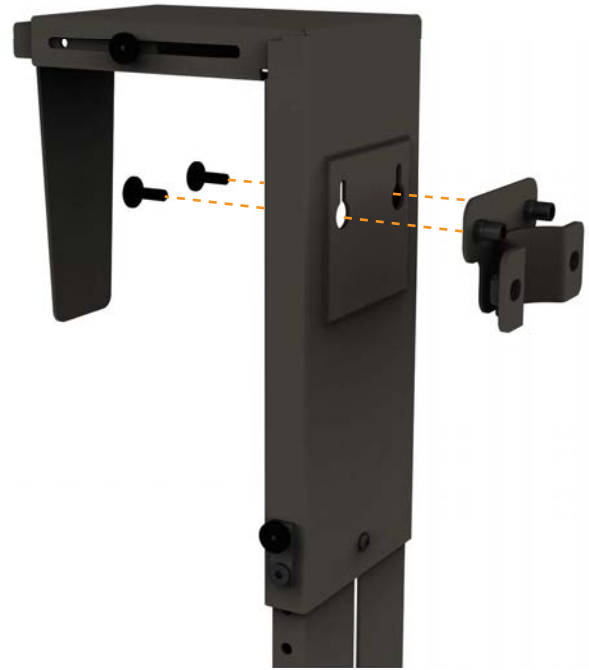
Use (2) 20mm Furniture Bolts.

20mm Furniture Bolt



Qty: 2

NOTE: If necessary, loosen the two stoppers and lower bottom piece to expose the mounting holes



### Step 10

Attach CPU Holder At the desired Height.

Use (1) Clamps and (2) 3/8 1/6 x 1" Socket Head Bolts.

Clamp



Qty: 1

3/8 1/6 x 1" Socket Head Bolt



Qty: 2

Clamp Bushing



Qty: 2



### Step 11

Attach Velcro Pads to both your CPU and CPU Holder.

Once in place, adjust Holder and tighten Thumb Nuts to keep CPU secure.

Velcro Pads



Qty: 2



Velcro



## CPU holder Adjustability

