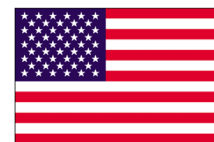


WorkNest Cube C - Glass Office Cubicle VOCC

REV. 02222024



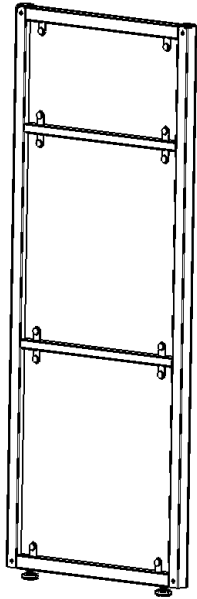
How can we improve our assembly instructions?
Your comments and suggestions are important to us.
Please e-mail us at: support@versaproducts.com



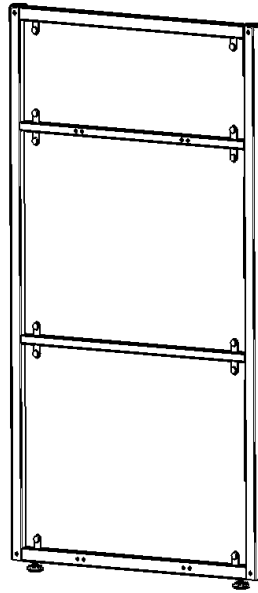
**MADE IN
AMERICA**



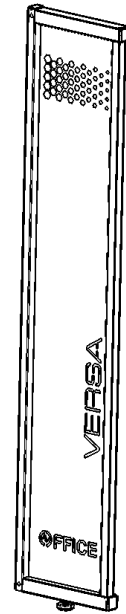
Parts



27" Panel **x2**



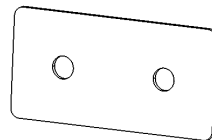
39" Panel **x2**



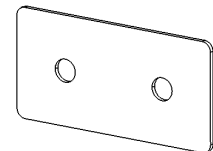
End Panel **x2**
(Left & Right)



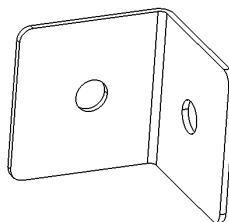
Connecting Post
x2



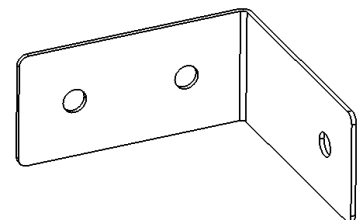
2.5" Connecting Bracket
x8



3" Connecting Bracket
x4

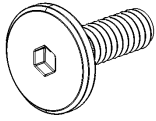


Inner Corner
Connecting Bracket **x4**



Outer Corner
Connecting Bracket **x4**

Hardware



1/4-20 x 20mm
Furniture Bolt

x44

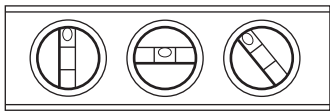


4mm Allen wrench
(included)



Power Supply

Additional Tools



Level



Tape measure

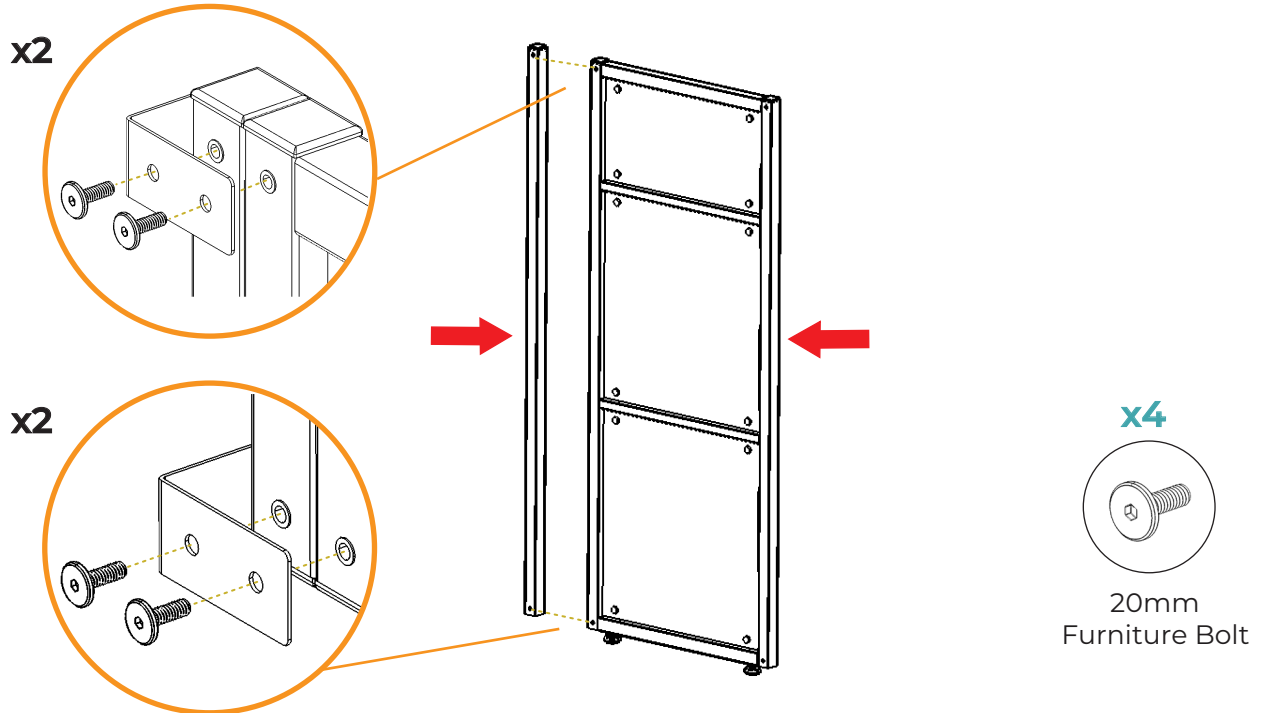
⚠ Attention ⚠



Assembly is very simple and can be done by (1) person,
However, we recommend (2) people for this assembly.

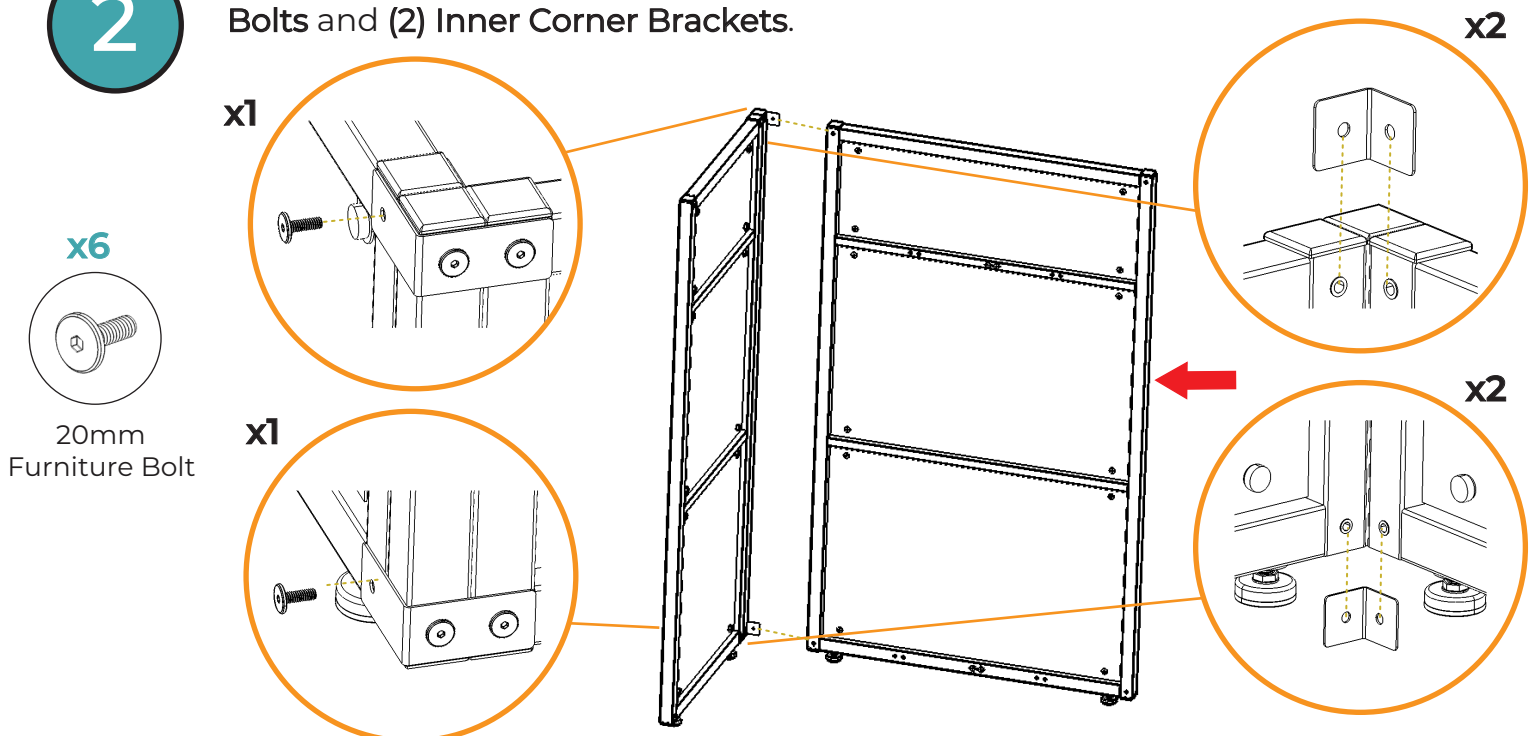
1

Connect the **27" Panel** to the **Connecting Post** using **(2) Outer Corner Brackets** and **(4) 20mm Furniture Bolts**.



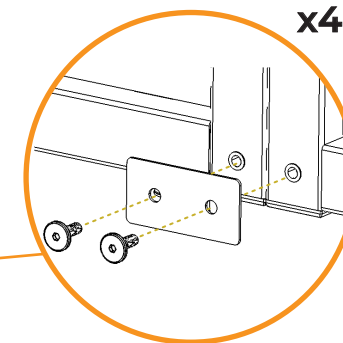
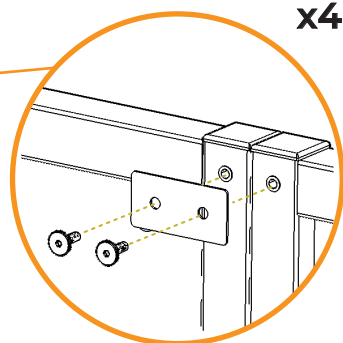
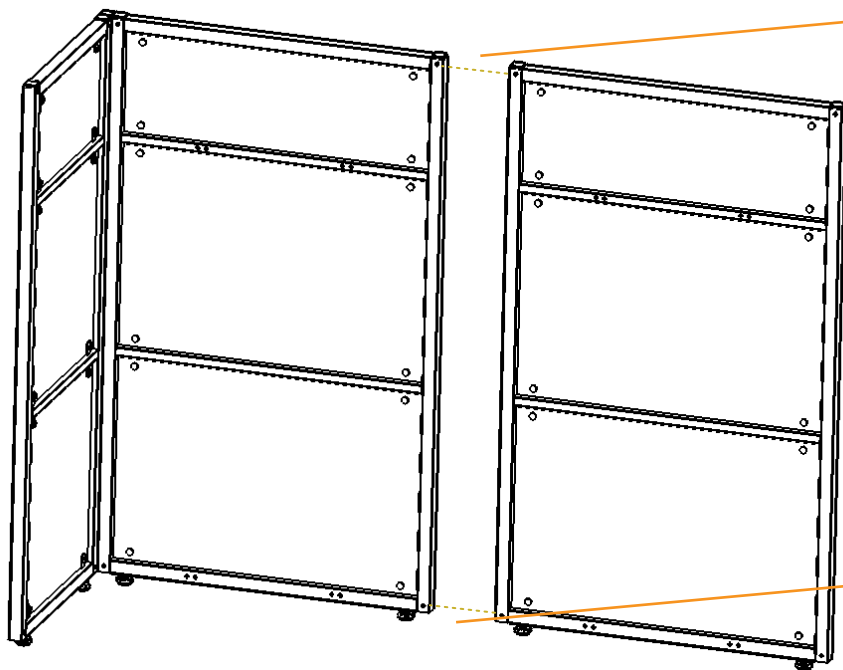
2

Connect the **39" Panel** to the **27" Panel** using **(6) 20mm Furniture Bolts** and **(2) Inner Corner Brackets**.



3

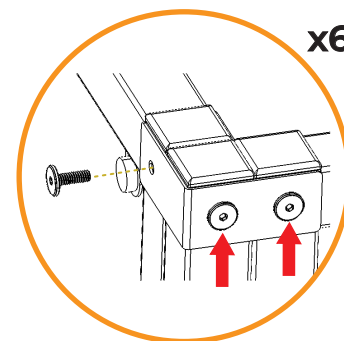
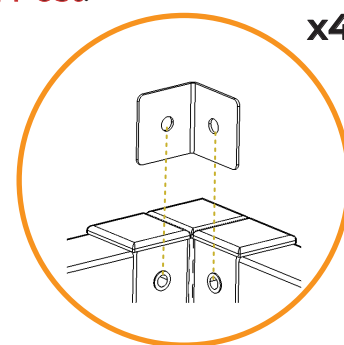
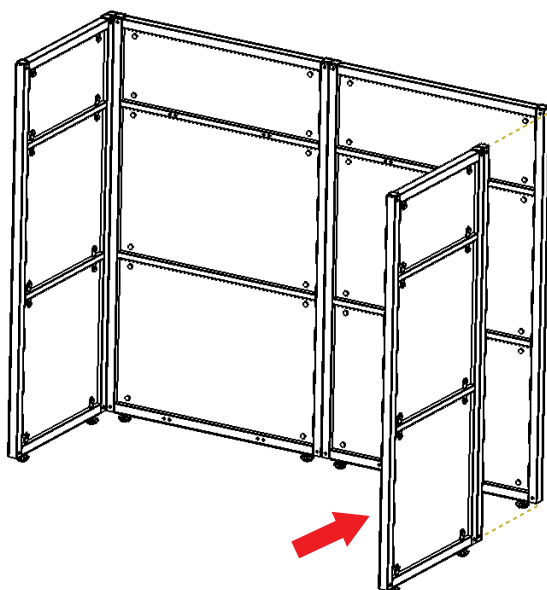
Connect a second **39" Panel** to the first using **(4) 3" Connecting Brackets** and **(8) 20mm Furniture Bolts**.



4

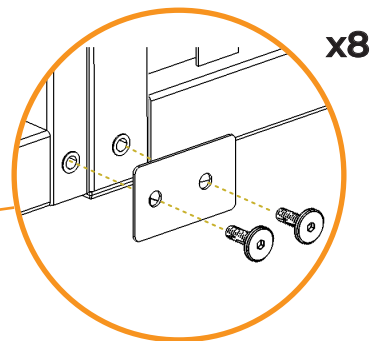
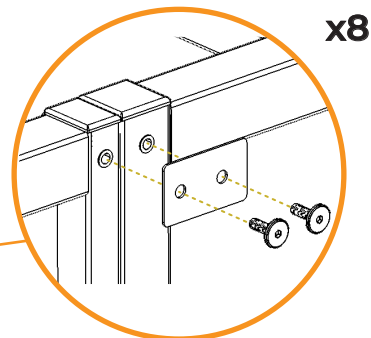
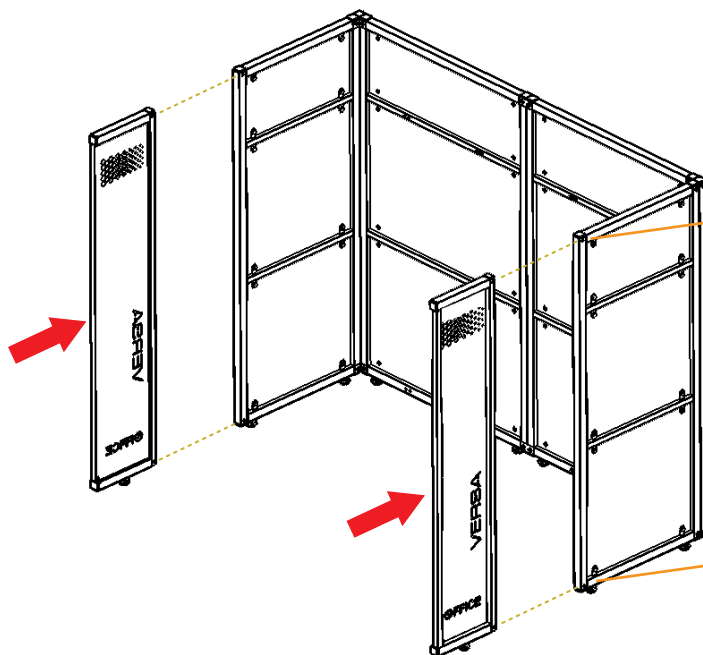
Repeat Step 1 to connect the 27" Panel to the Connecting Post.

Then, connect the second **27" Panel** to the **39" Panel**. You will need to use **(2) Outer Corner Brackets**, **(2) Inner Corner Brackets** and **(10) 20mm Furniture Bolts**.



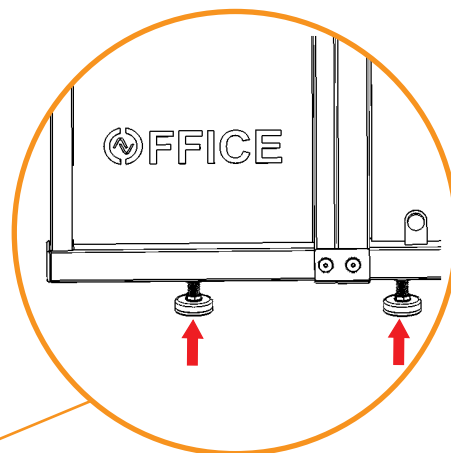
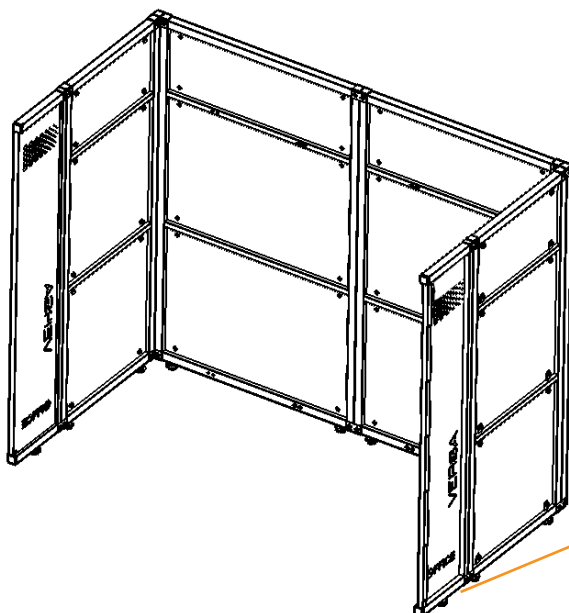
5

Connect both **End Panels** to the **27" Panels** using **(8) 2.5" Connecting Brackets** and **(16) 20mm Furniture Bolts**.



6

Use a **Level** to make sure that all of the panels are set up properly. If you need to adjust the height, turn the **Glid**ers at the bottom of each panel.

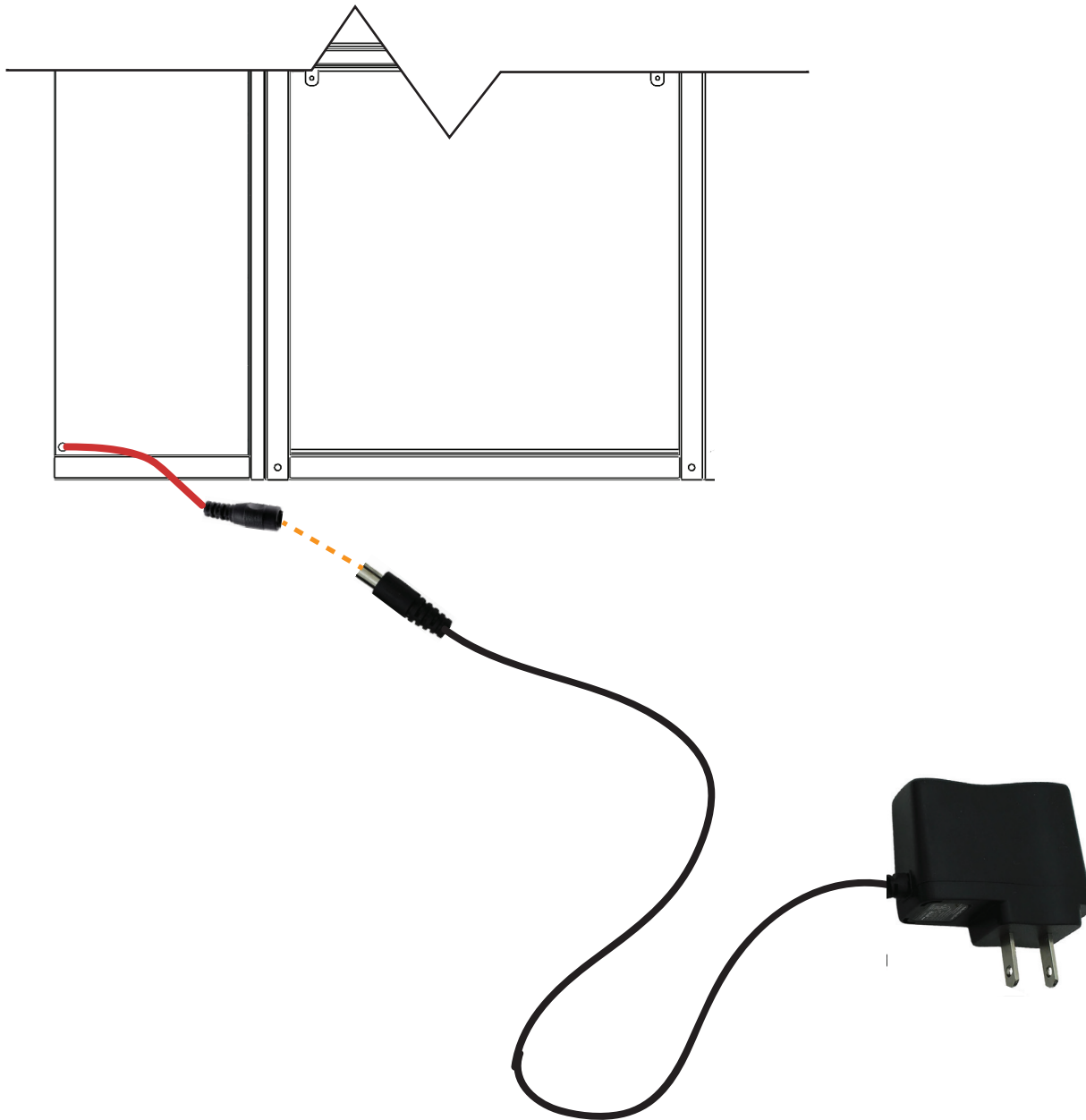


7

Connect the Male end of the provided **Power Supply** to the Female end of the pre-installed wire on the **End Panel**. Connect the **Power Supply** to the outlet to power on the LED Lights

Refer to the diagram Below:

(Not Drawn To Scale)



8

Your new cubicle is now ready for use.

