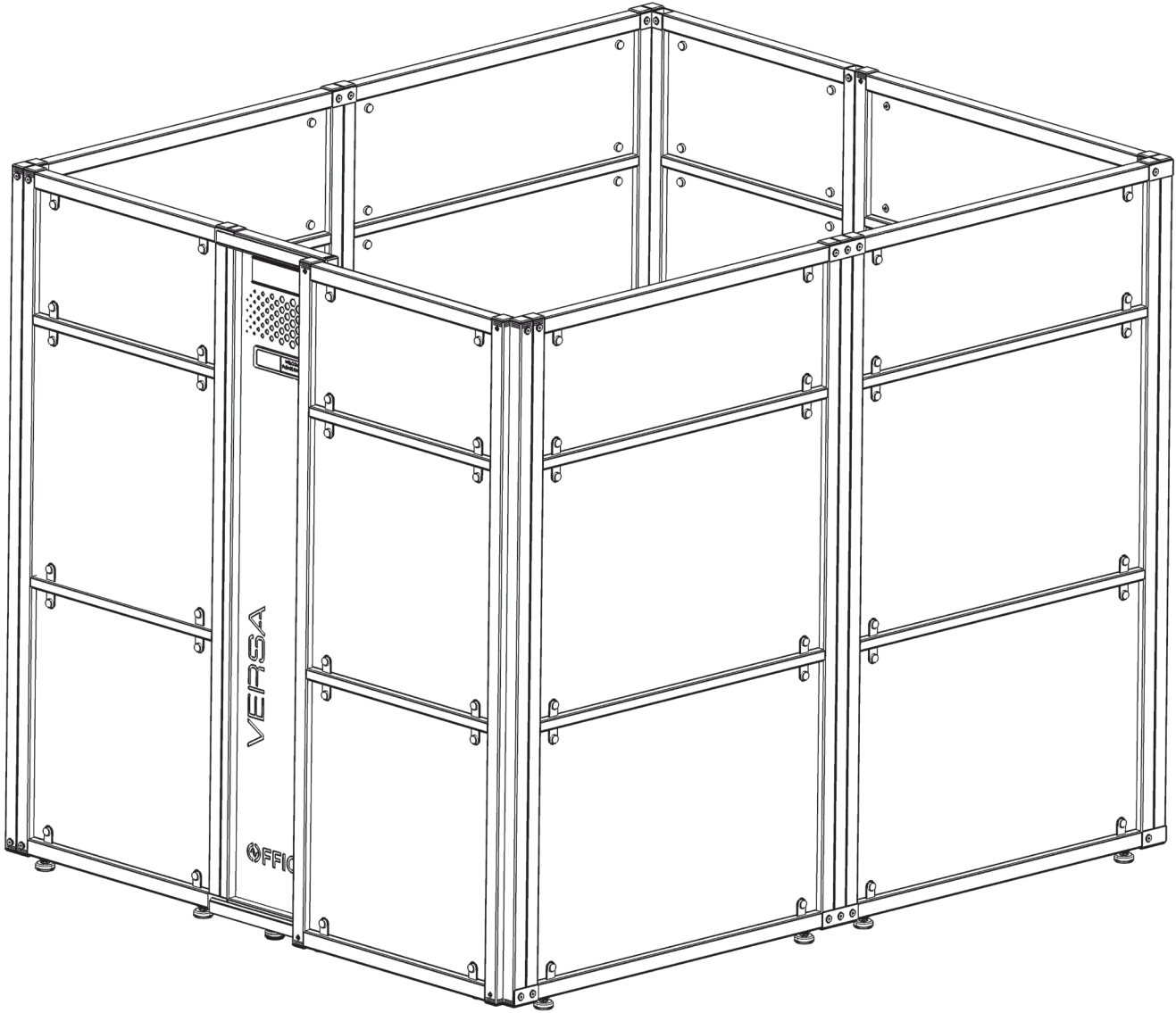
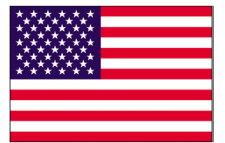


WorkNest Cube O - Glass Office Cubicle
VOCO

REV. 09032024



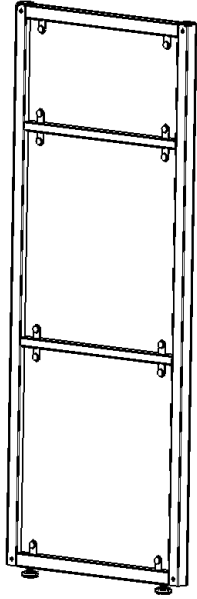
How can we improve our assembly instructions?
Your comments and suggestions are important to us.
Please e-mail us at: support@versaproducts.com



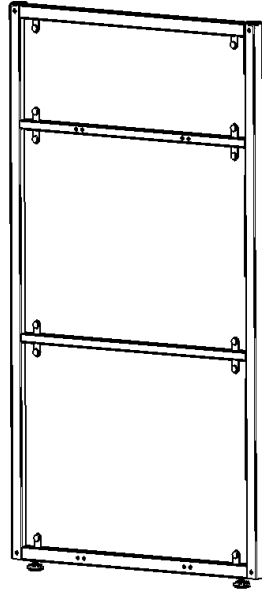
**MADE IN
AMERICA**



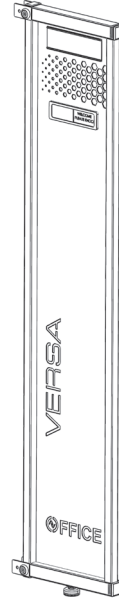
Parts



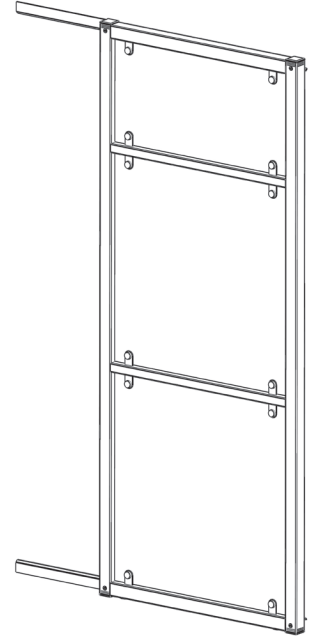
27" Panel **x2**



39" Panel **x5**



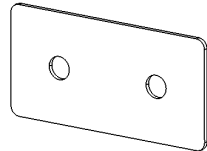
End Panel **x1**



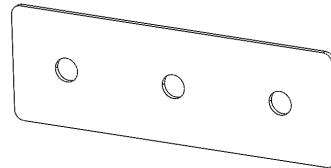
Door Assembly **x1**



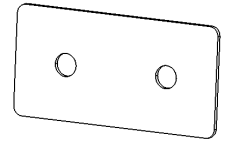
Connecting Post
x5



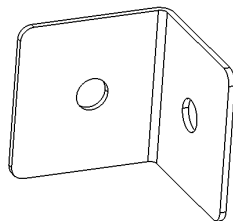
3" Connecting Bracket
x12



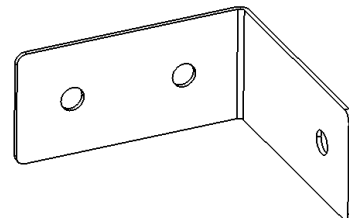
4.5" Connecting Bracket
x4



2.5" Connecting Bracket
x4

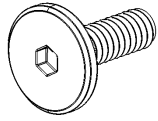


Inner Corner
Connecting Bracket **x6**

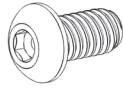


Outer Corner
Connecting Bracket **x6**

Hardware



1/4-20 x 20mm
Furniture Bolt
x70



1/4-20 x 1/2"
Button Head Screw
x2

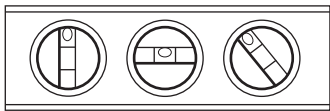


4mm Allen wrench
(included)



Power Supply

Additional Tools



Level



Tape measure

⚠ Attention ⚠

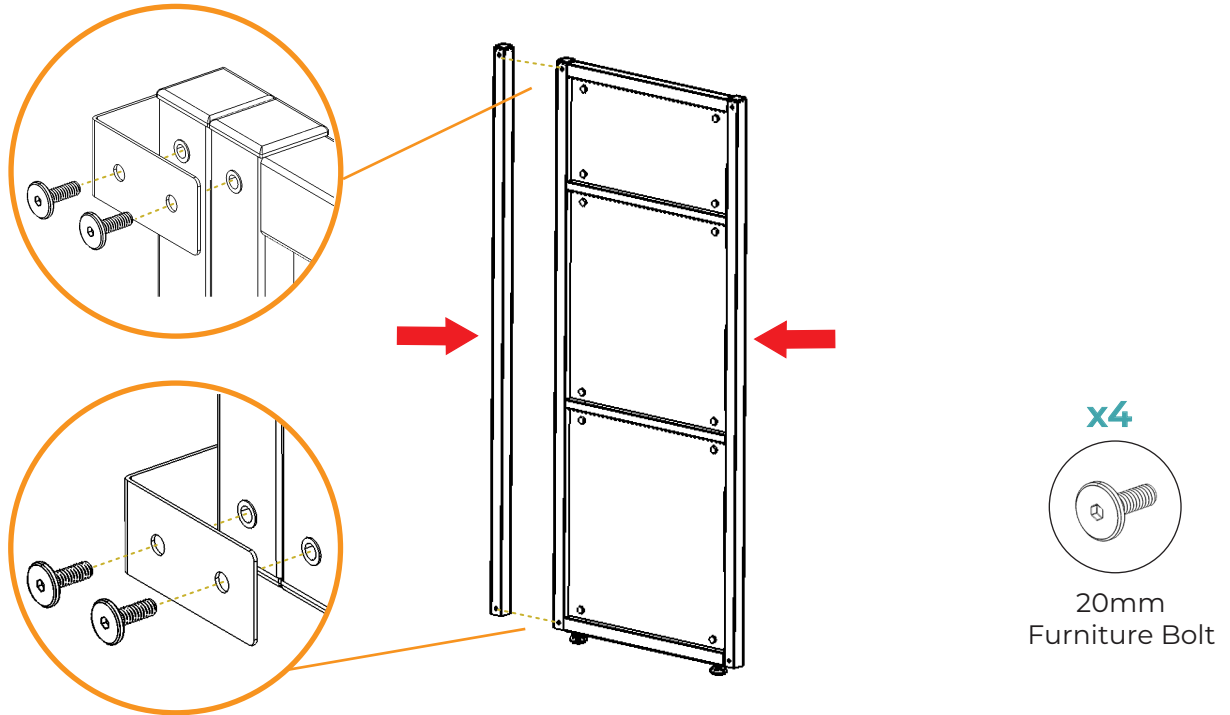


Assembly is very simple and can be done by (1) person,
However, we recommend (2) people for this assembly.



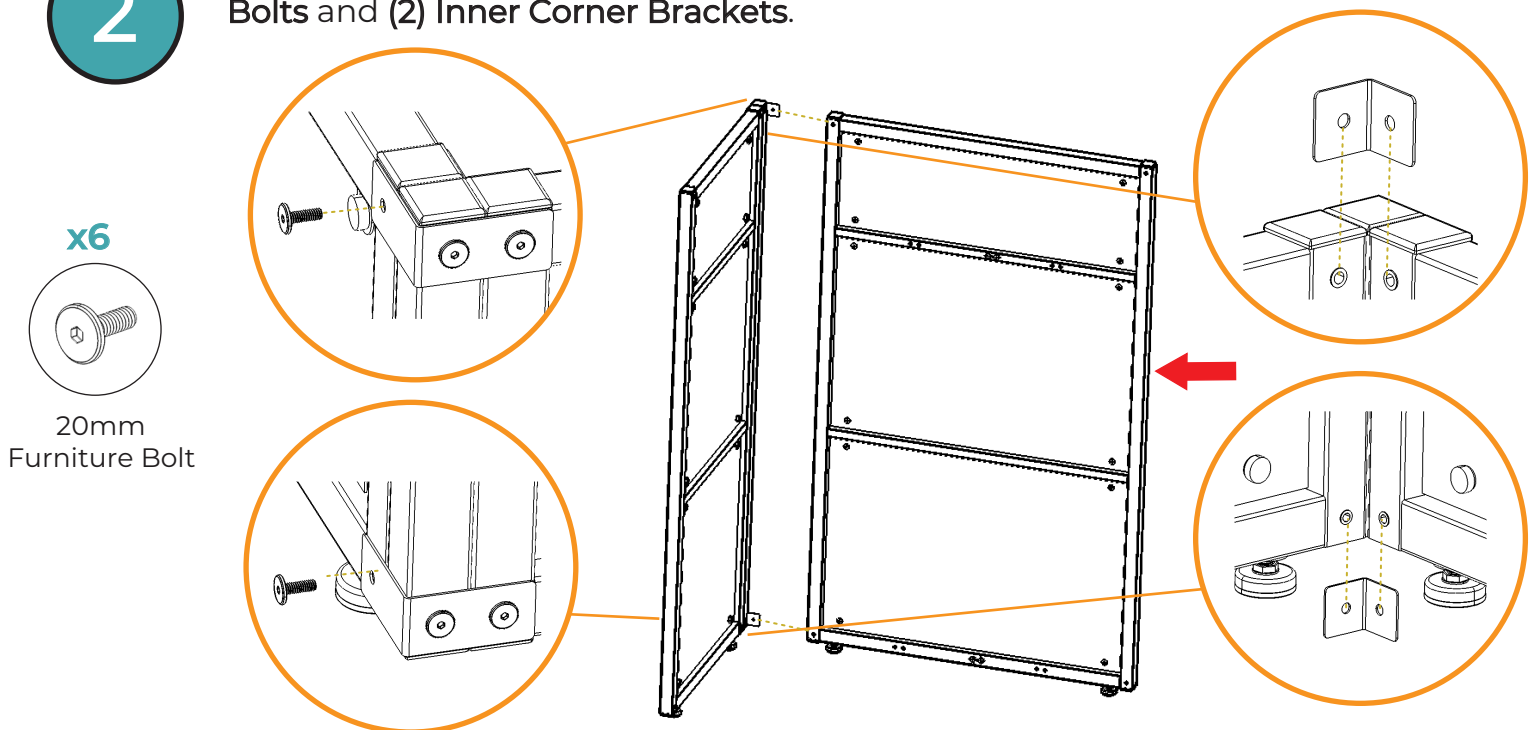
1

Connect the **27" Panel** to the **Connecting Post** using **(2) Outer Corner Brackets** and **(4) 20mm Furniture Bolts**.



2

Connect the **39" Panel** to the **27" Panel** using **(6) 20mm Furniture Bolts** and **(2) Inner Corner Brackets**.

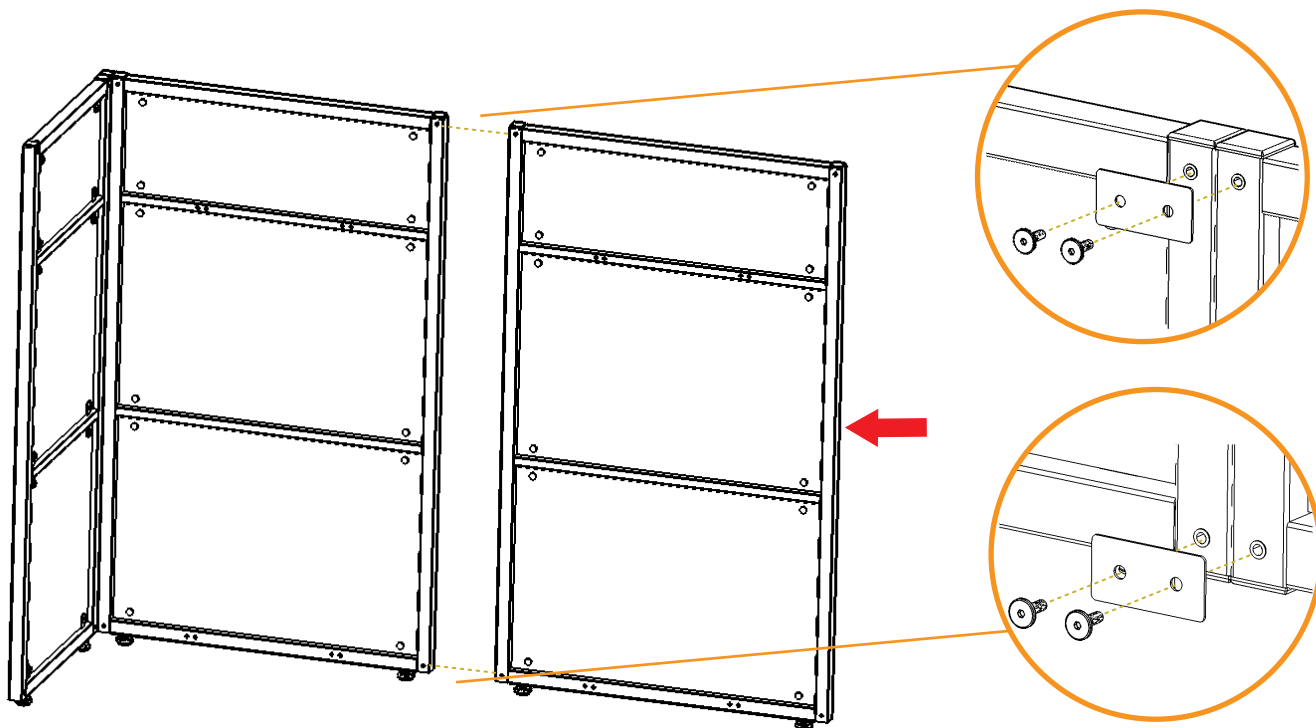


3

Connect a second **39" Panel** to the first using **(4) 3" Connecting Brackets** and **(8) 20mm Furniture Bolts**.

x8

 20mm Furniture Bolt

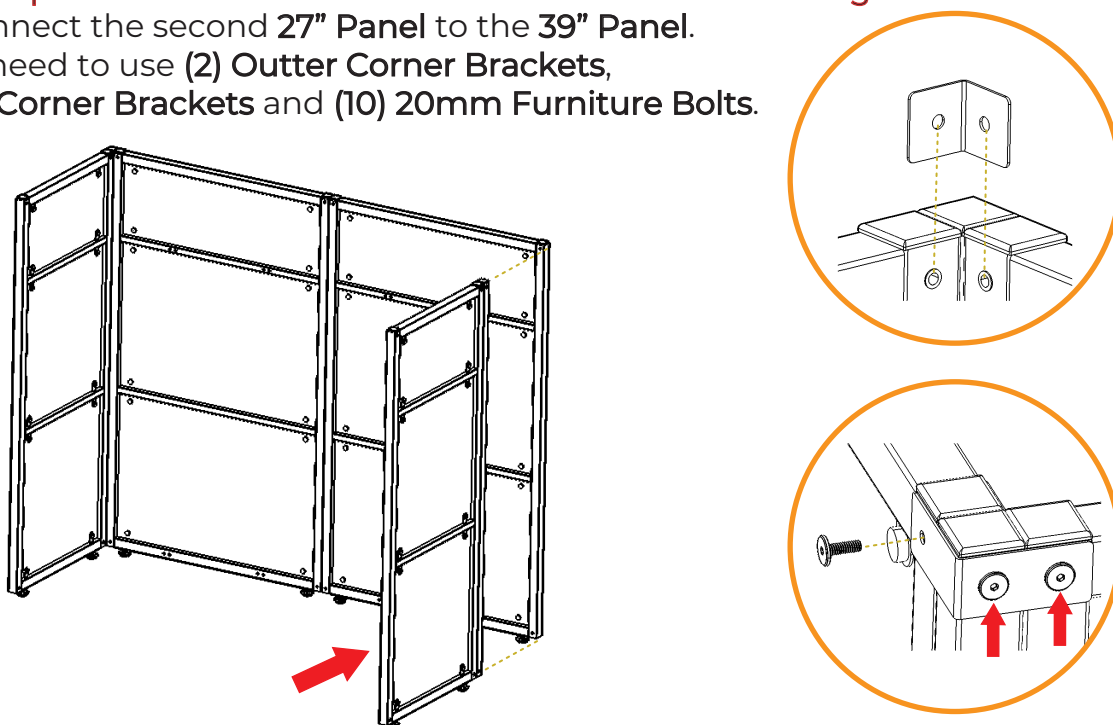


4

Repeat Step 1 and 2 to connect the **27" Panel** to the **Connecting Post**. Then, connect the second **27" Panel** to the **39" Panel**. You will need to use **(2) Outer Corner Brackets**, **(2) Inner Corner Brackets** and **(10) 20mm Furniture Bolts**.

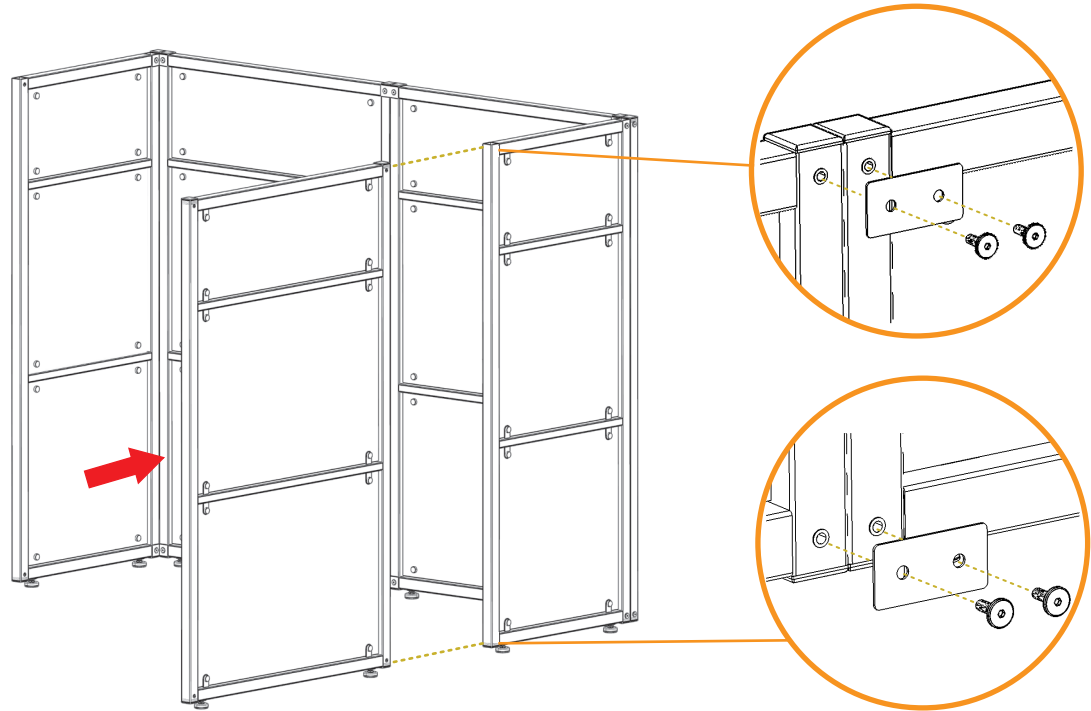
x10

 20mm Furniture Bolt

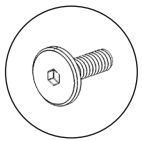


5

Connect the third **39"** Panel to the **27"** Panel using **(4) 3" Connecting Brackets** and **(8) 20mm Furniture Bolts**.



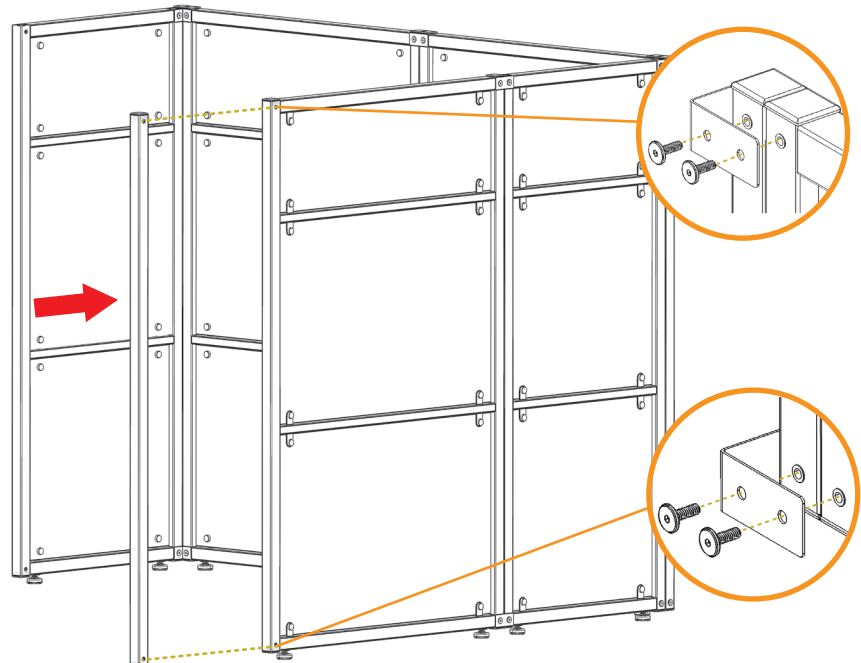
x8



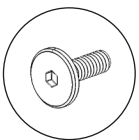
20mm Furniture Bolt

6

Connect a **Connecting Post** to the **39"** Panel using **(2) Outer Corner Brackets** and **(4) 20mm Furniture Bolts**.



x4

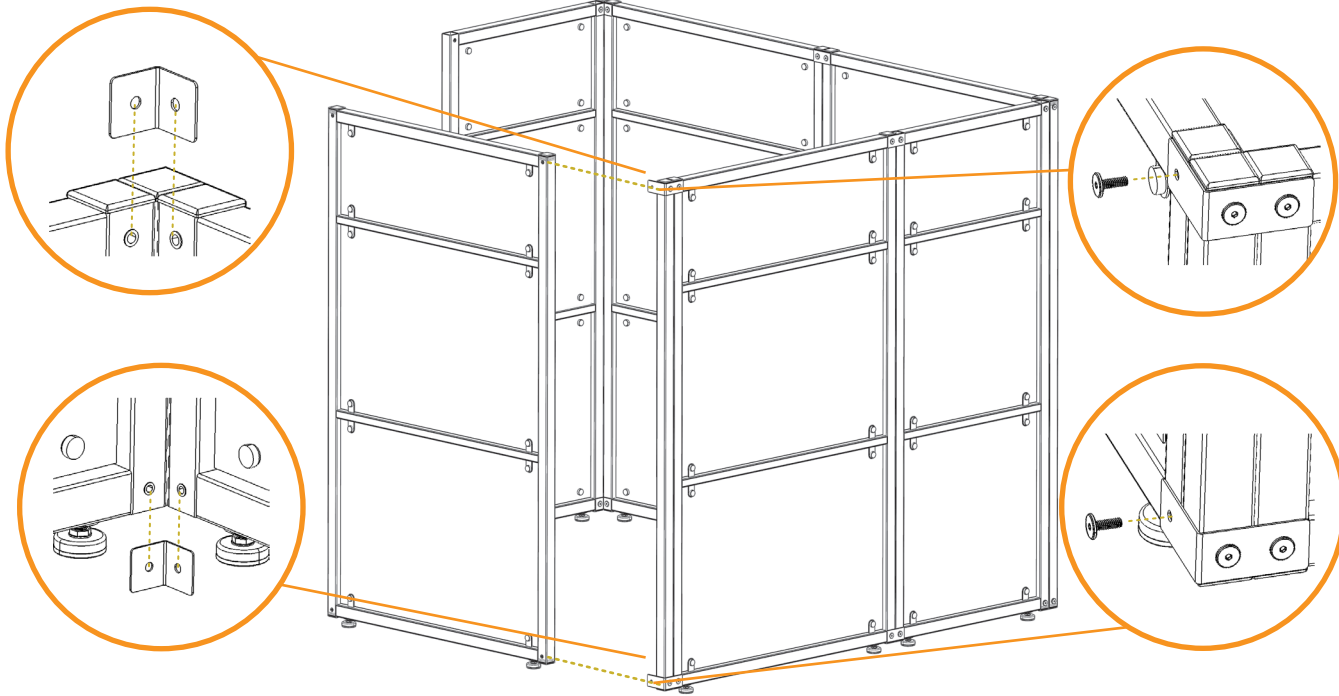


20mm Furniture Bolt

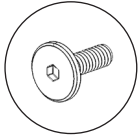


7

Similarly to Step 2, Connect the **39" Panel** to the **27" Panel** using **(6) 20mm Furniture Bolts** and **(2) Inner Corner Brackets**.



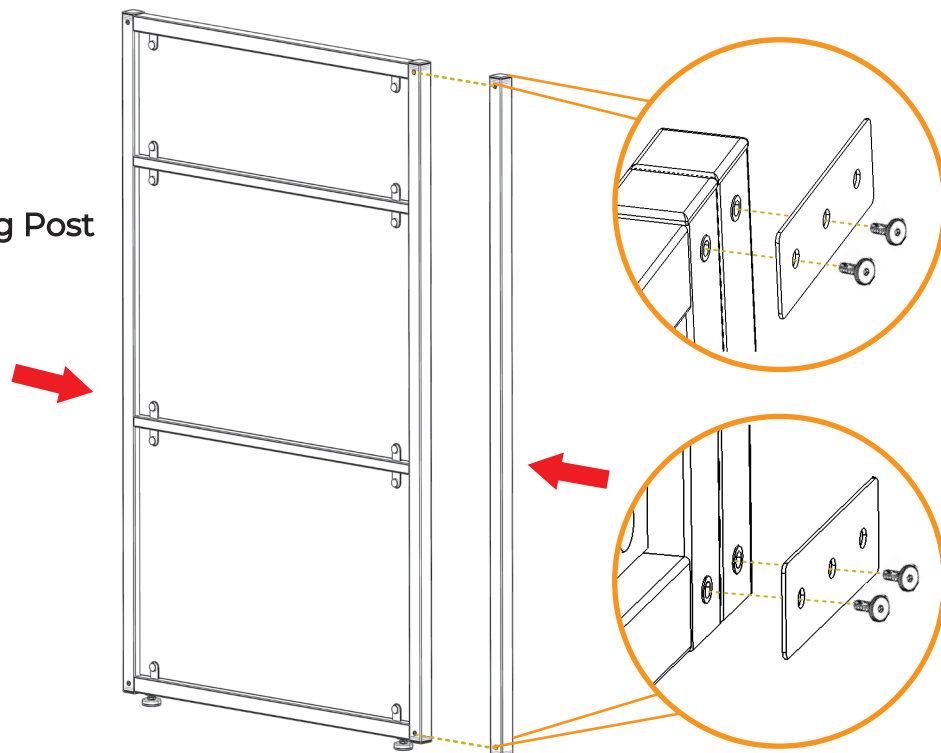
x6



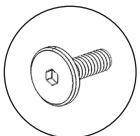
20mm
Furniture Bolt

8

Connect a **39" Panel** to a **Connecting Post** using **(4) 4.5" Connecting Brackets** and **(8) 20mm Furniture Bolts**.



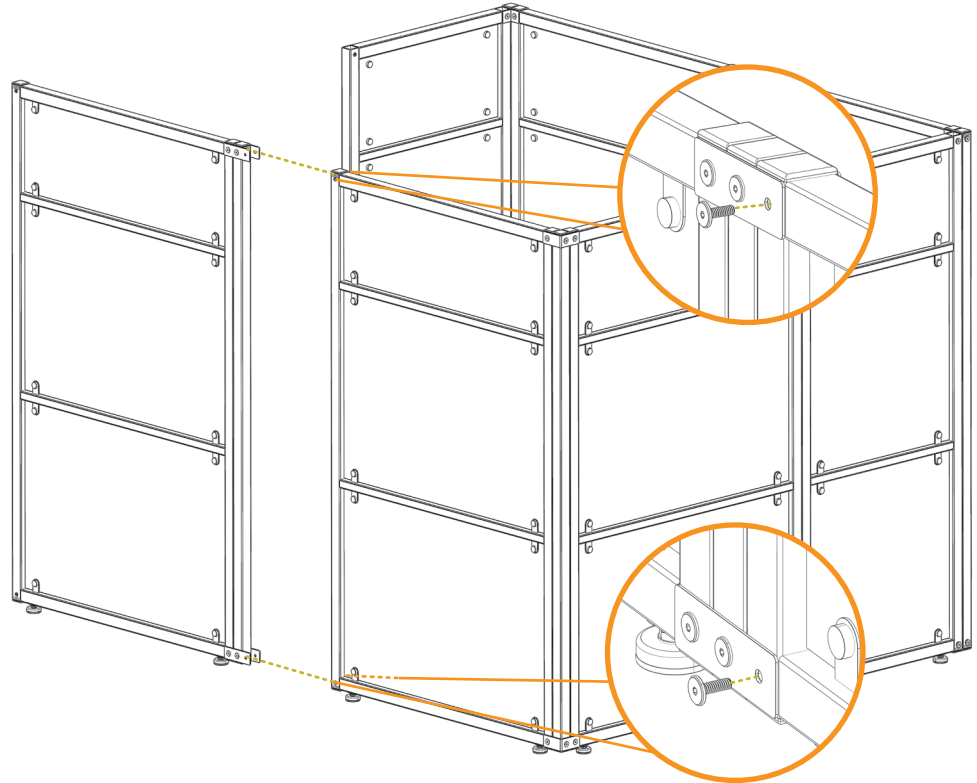
x8



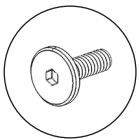
20mm
Furniture Bolt

9

Connect the **39" Panel/Connecting Post** assembly to the **39" Panel** using **(4) 20mm Furniture Bolts** (Both sides).



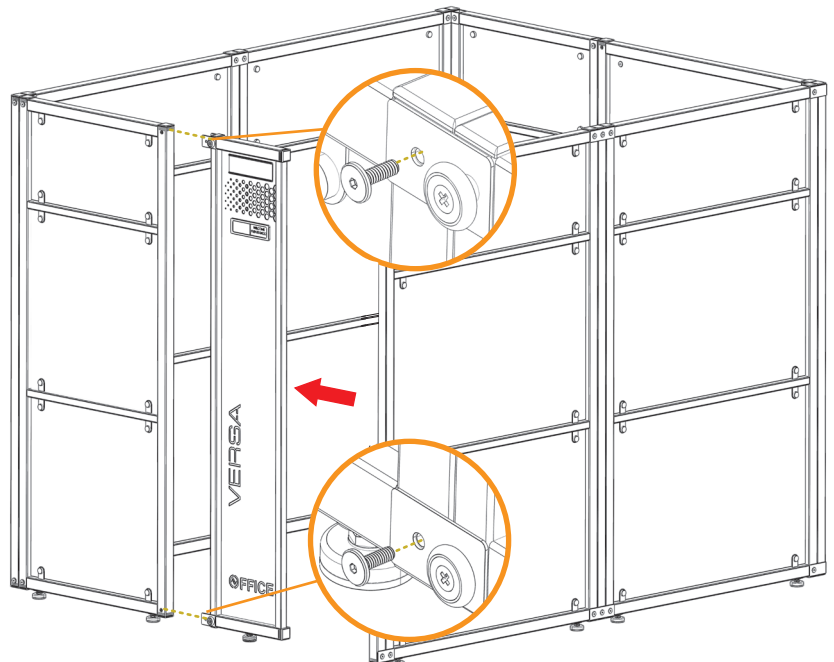
x4



20mm
Furniture Bolt

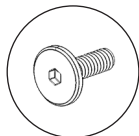
10

Connect the **End Panel** to the **39" Panel** as shown. Attach using a total of **(4) 2.5" Connecting Brackets** and **(4) 20mm Furniture Bolts** (Both Sides).



Note: For your convenience, this part may already come pre-assembled

x4



20mm
Furniture Bolt

11

Slide the **Door Assembly** into place ensuring the wheels enter the channels as shown below.

Insert (1) **1/4-20 x 1/2" Button Head Screw** into the opening shown in Fig 11.1 on **Both Top and Bottom** channel. Ensure the opening is past the wheel before inserting.

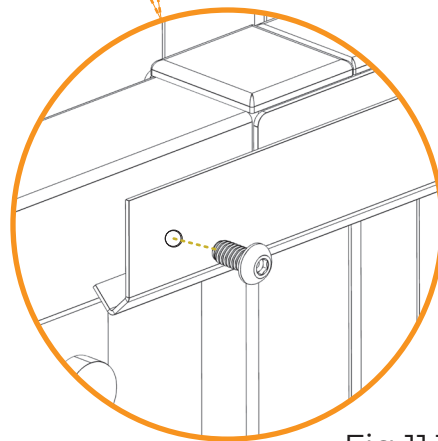
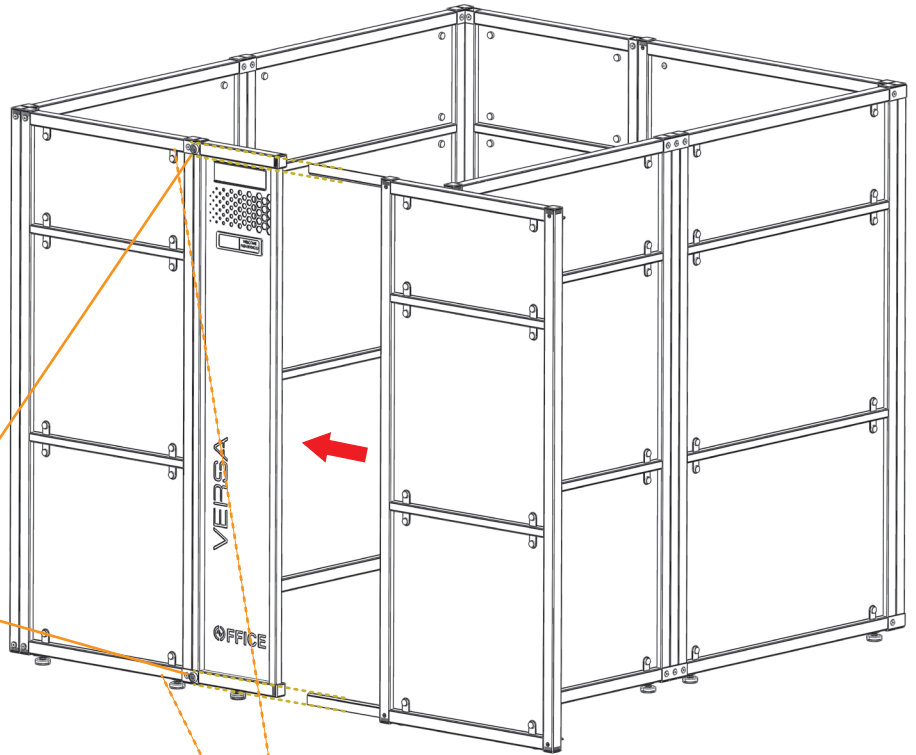
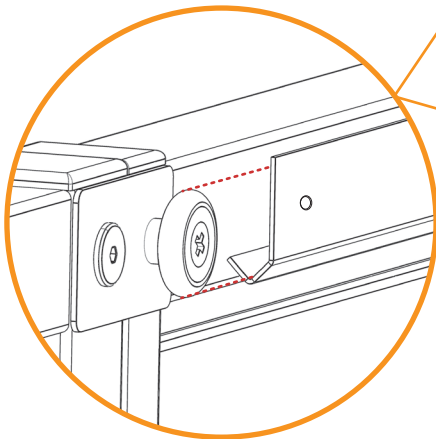
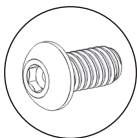


Fig 11.1

x2

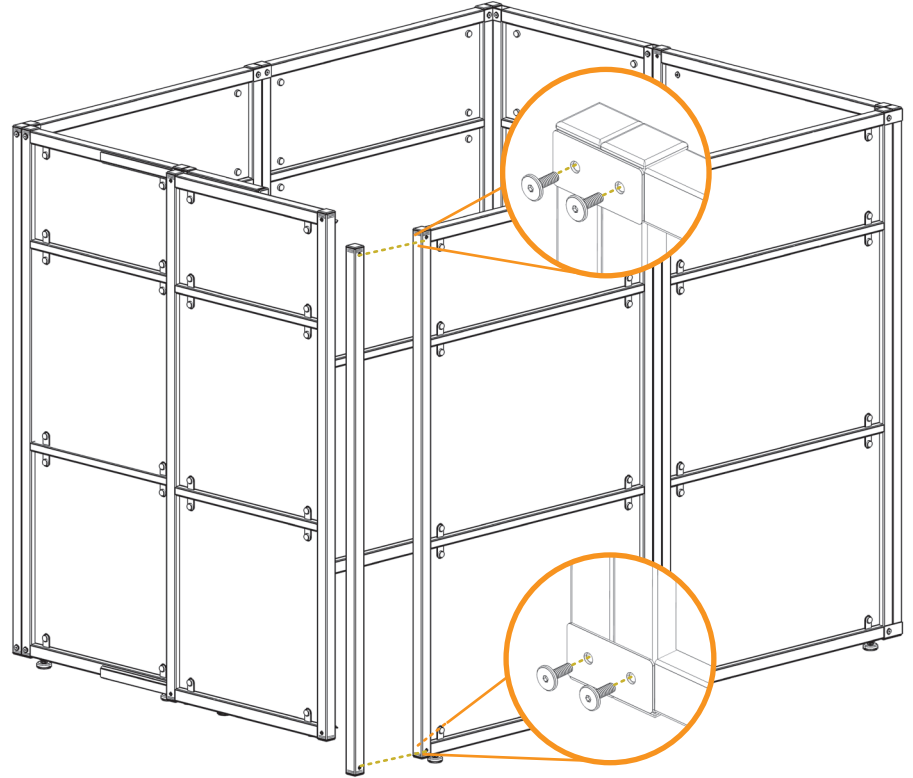


1/4-20 x 1/2"
Button Head Screw

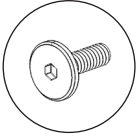


12

Align a **Connecting Post** to the **39" Panel** and attach using **(4) 3" Connecting Brackets** and **(8) 20mm Furniture Bolts**.



x8



20mm Furniture Bolt

13

Your new cubicle is now ready for use.

